

Keith Ray Mackie

BES, MA, LPC
Confidence Coaching,
Education & Trauma Specialist

KRM Counseling & Consulting, LLC

(417) 838-9461

Simple Dreams Life





An ornate dining room interior. In the background, a portrait of Queen Victoria and Prince Albert is displayed above a fireplace. To the left, a large chandelier with many crystal droplets hangs over a table. A bar cart with bottles is positioned near the fireplace. In the foreground, two tables are set with white linens, glassware, and red roses. The room features wood paneling and a patterned carpet.

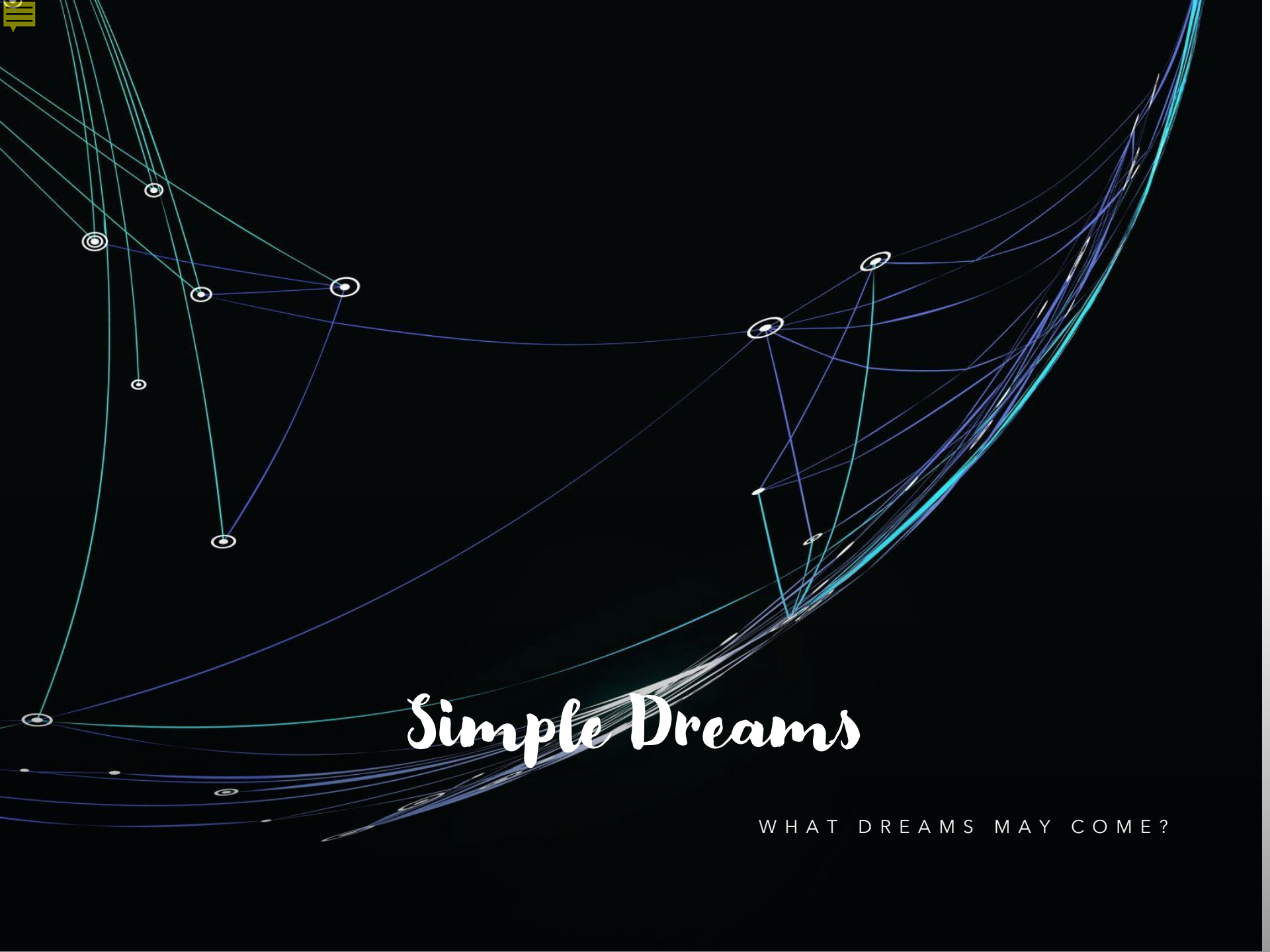
Victoria & Albert's

Amuse Bouche





Fantastic



Simple Dreams

WHAT DREAMS MAY COME?



Leap of Faith



Dreams





AI

Beliefs

A Simple Dream





Mystery

A close-up photograph of a baby's face. The baby has light skin and bright blue eyes. A hand is visible on the left side of the frame, gently holding the baby's head. The word "Self" is written in a black, cursive font over the baby's left eye. The baby is wearing a blue garment. The background is dark and out of focus.

Self



Self

melissa bliss
PHOTOGRAPHY

Self







Trust



Trust



Trust



Power

A close-up portrait of a young girl with dark hair in two braids, wearing a vibrant, multi-colored patterned shirt. She is looking directly at the camera with a neutral expression. In the background, two other people are visible but out of focus: a woman in a similar patterned shirt and a child in a blue and green patterned shirt. The background wall is a warm, textured orange-red color.

Power



Power



Power



Power

A portrait of a middle-aged man with dark hair and a mustache, wearing a dark suit, white shirt, and patterned tie. He is seated in a black leather chair against a solid red background. The word "Power" is written in a white, stylized font on the left side of the image.

Power



Power



Unconscious

I see ...







Fear



Confidence



Discipline

Unconscious





Repetition

Keith Ray Mackie

BES, MA, LPC
Confidence Coaching,
Education & Trauma Specialist

KRM Counseling & Consulting, LLC

(417) 838-9461

Simple Dreams Life





A red heart is the central focus, set against a dark, textured background. The heart has a large, light-colored bandage on its left side and several black stitches along its top and right edges. A white, polka-dotted patch is visible on the right side of the heart. The overall image conveys a sense of healing and restoration.

Restoring Trust



Restoring Self

Restoring Power



Focus



Keith Ray Mackie

BES, MA, LPC
Confidence Coaching,
Education & Trauma Specialist

KRM Counseling & Consulting, LLC

(417) 838-9461

Simple Dreams Life

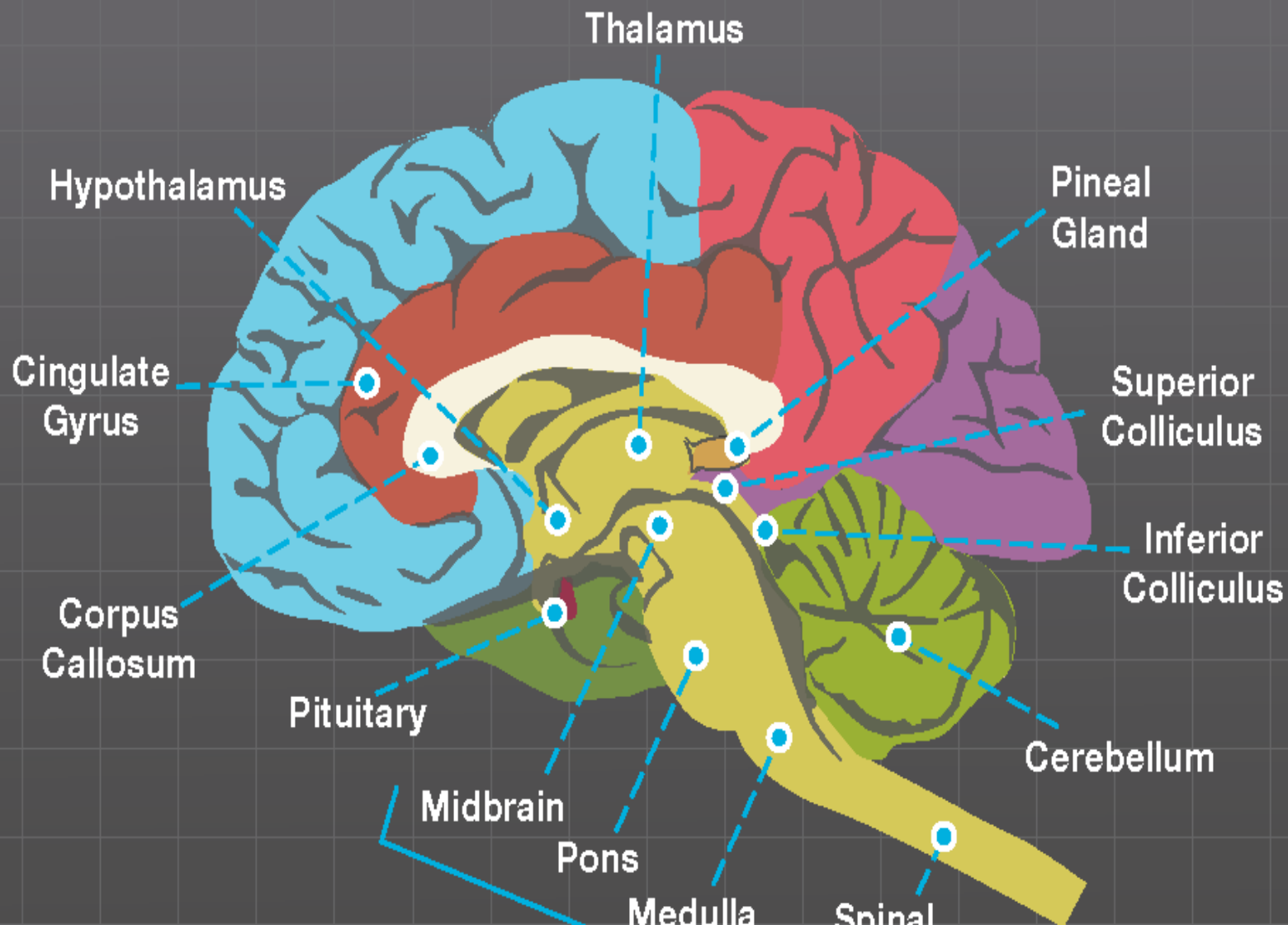




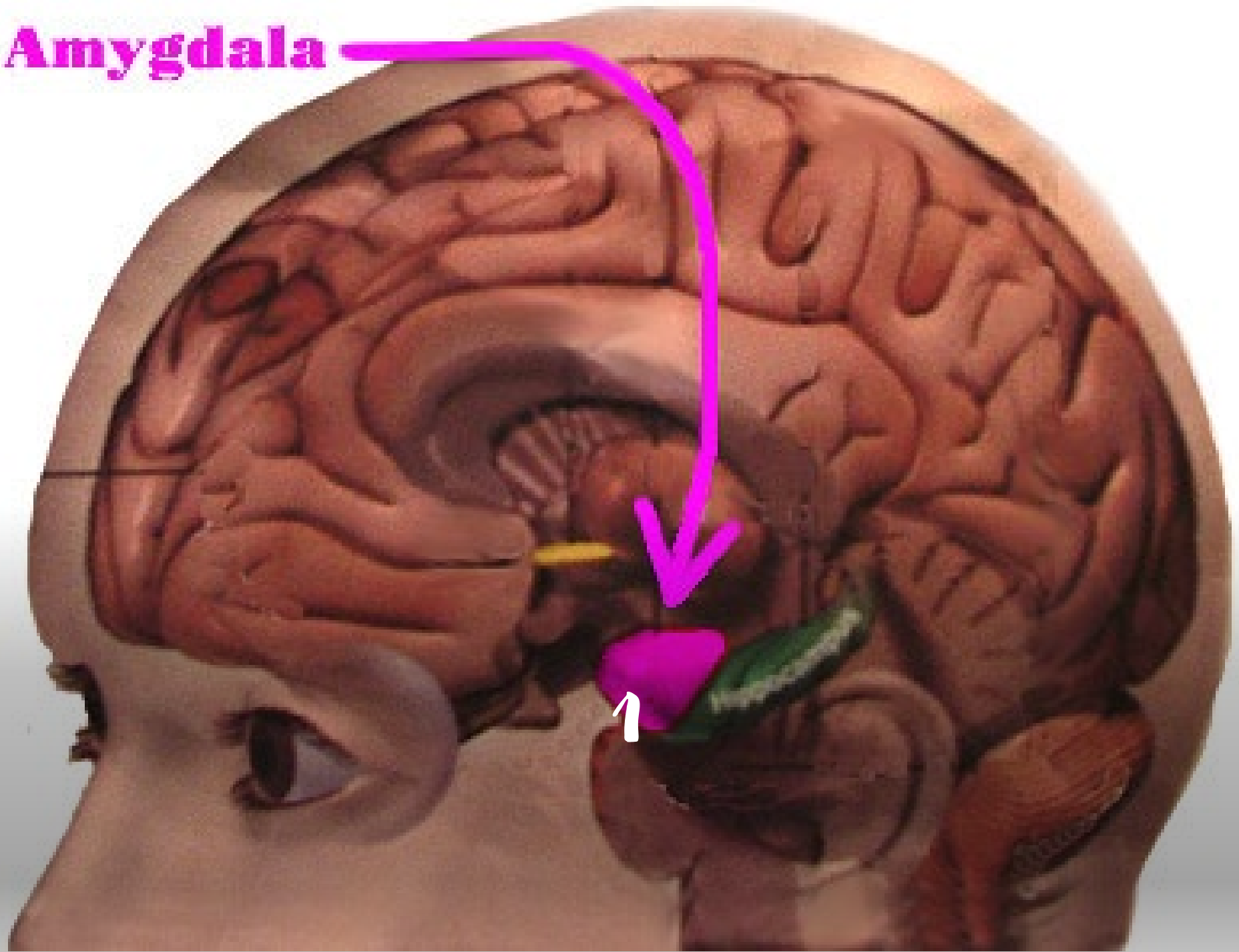
Office Phone:
417-595-0600

MARCIA MACKIE
417-838-339

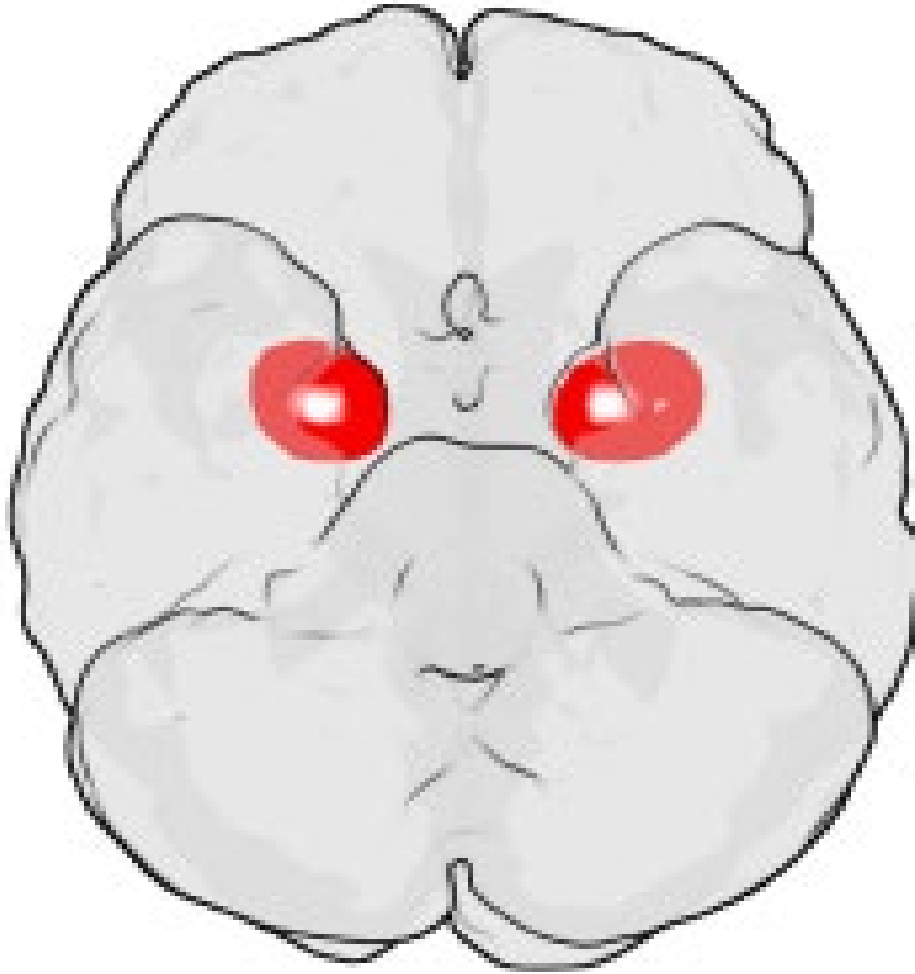
In 10 Years
You are a
REALTOR...
Tell me how
a Simple
Dream...
Came true .
How'd it
happen?



Amygdala



Amagdyla

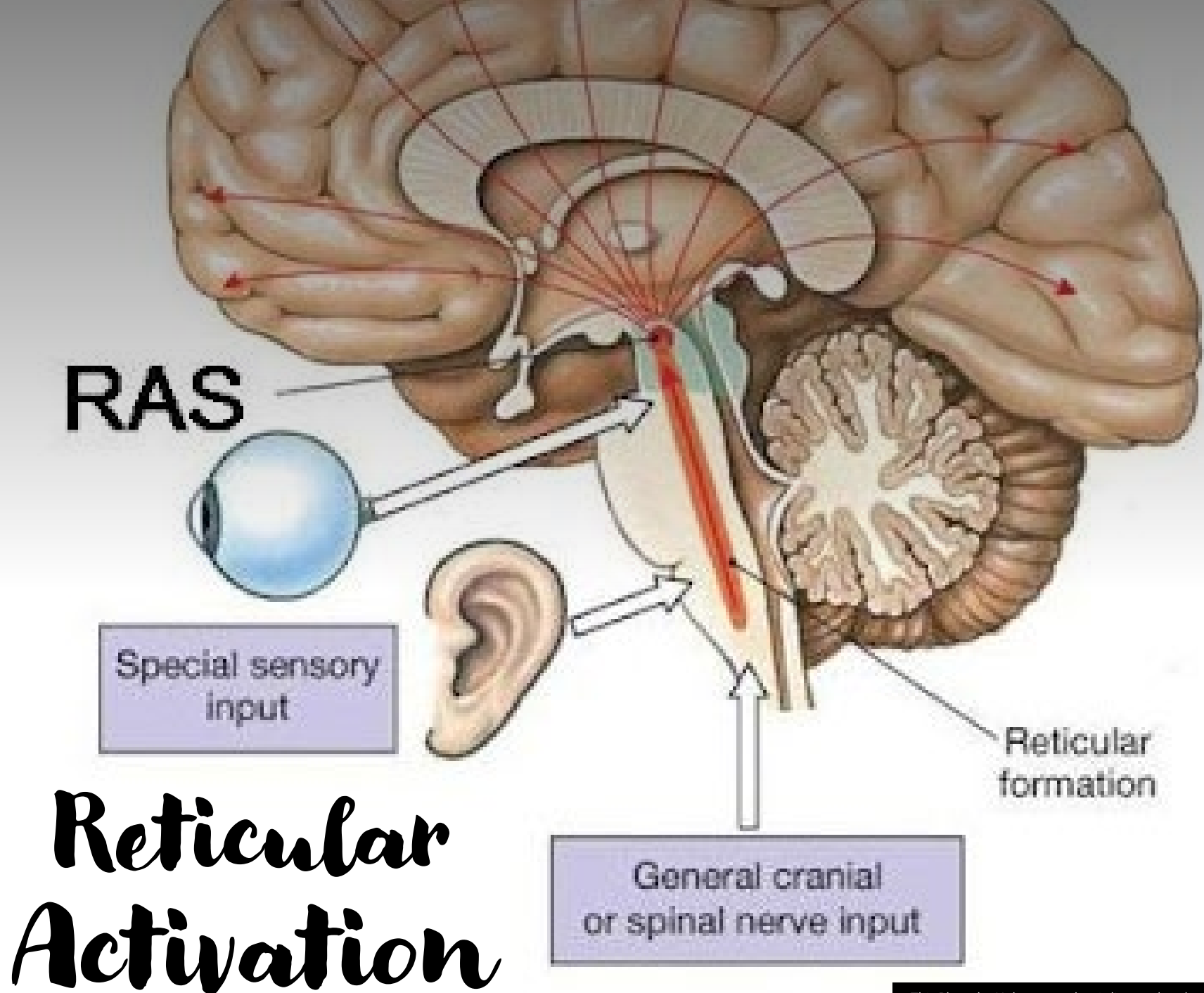


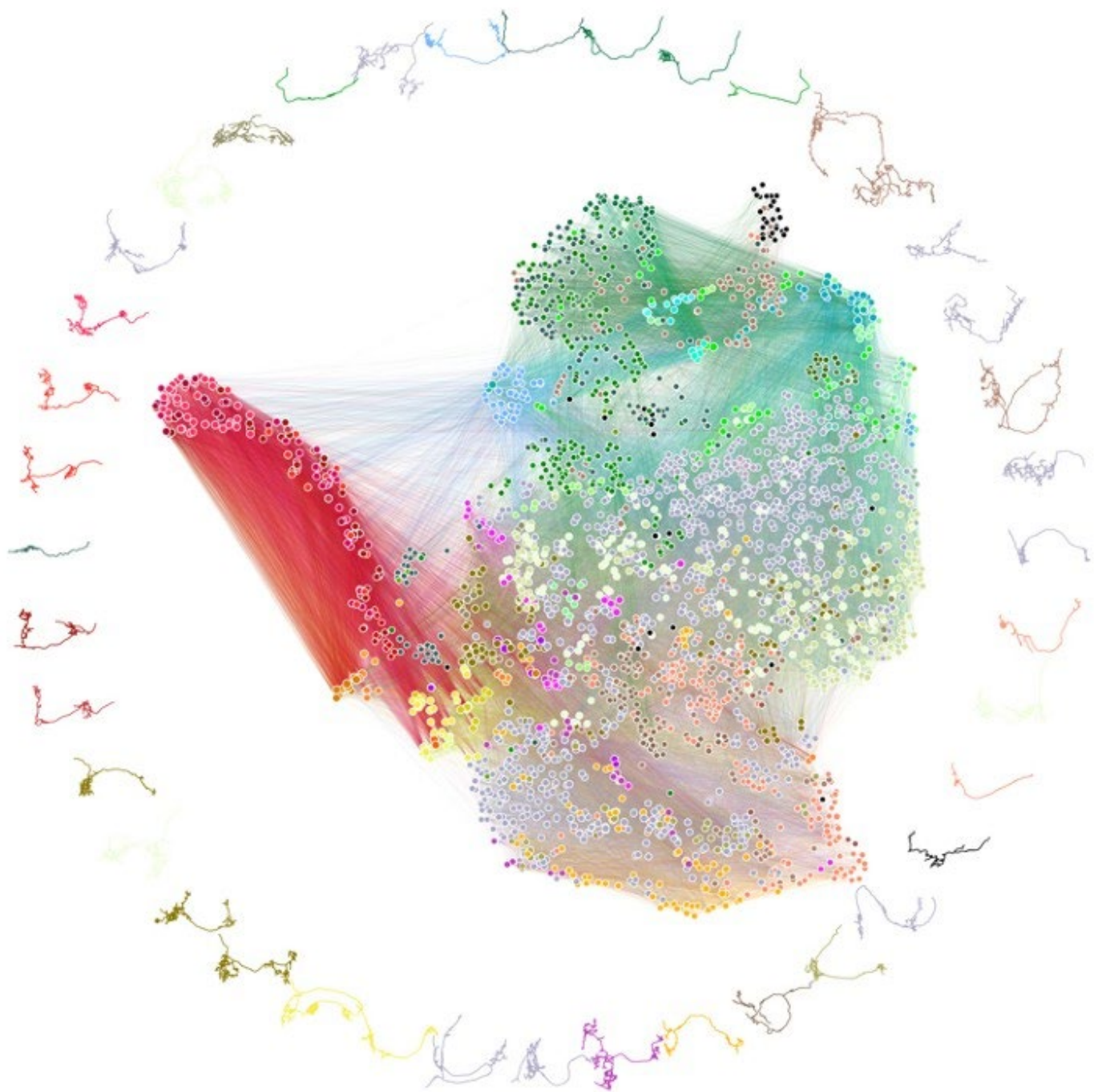
Hypothalamus

Hypothalamus

Optic
nerve

Pituitary
gland







Intimacy



Somebody To Love