


Advanced Topics in Reentry

By
Steve Gordon
*Strategist for the Social Reintegration
of Formerly Incarcerated Adults*

About Me

- Founder & Lead Consultant @ 
- Blogger: AllThingsReentry.com
- Co-host of *All Things Reentry* radio program
- Creator of *Reentry Lifeskills Academy* online
- Author of book *Purposeful Neighboring - Creating Reentry-Ready Communities*
- Advocate for Reducing the U.S. Prison Population by 50% by 2030
- 2015 JustLeadershipUSA *Leading with Conviction* Leader 

Copyright © 2015 by the Strategic Reentry Group. All Rights Reserved. www.StrategicReentryGroup.com

Before We Start: Re-Humanizing Reentry

- Language is important!
- Not convicts, felons, offenders, inmates, or prisoners
 - ADULTS IN CUSTODY
 - (Or JUVENILES IN CUSTODY)
- Not ex-felons, ex-offenders, returning citizens
 - CLIENTS
 - JUSTICE-INVOLVED CLIENTS
 - FORMERLY INCARCERATED LEADERS

Copyright © 2015 by the Strategic Reentry Group. All Rights Reserved. www.StrategicReentryGroup.com

Advanced Topics in 2015

- The Reentry Reformation
- The Essential Reentry Model
- The Reentry Collaboration Model
- The Community Justice Model
- Implementing a Web-Based Resource Directory
- Reentry Management Information Systems
- Statewide Partnership for Successful Reentry
- Reentry Organizations: ROC & RMO
- Continuum of Care

Copyright © 2015 by the Strategic Reentry Group. All Rights Reserved. www.StrategicReentryGroup.com

The Reentry Reformation

- From Institutionalized Justice to Community Justice
- From Corrections-Centered Reentry to Community-Centered Reentry
- From Deficit-Based Planning to Strengths-Based Planning
- Using Assessments and Data Combined with Compassion and Dignity
- Addressing Complex Needs with Individualized Solutions

Copyright © 2015 by the Strategic Reentry Group. All Rights Reserved. www.StrategicReentryGroup.com

The Framework for Reentry Reformation

"Outside"	"Inside"
PHASE 1: COMMUNITY REFORMATION Reentry "stakeholders" collaborate to build a broad-based Reentry Coalition of service providers, community partners and criminal justice leaders to create a REENTRY-READY COMMUNITY .	PHASE 3: CORRECTIONS REFORMATION The Department of Corrections (and jails) implements numerous reforms (based on national best practices) to become REENTRY-CENTRIC .
PHASE 2: FAMILY REFORMATION The Reentry Coalition works with the local faith community to create family support groups – the result: REENTRY-READY FAMILIES .	PHASE 4: INMATE REFORMATION The Reentry Coalition provides an army of trained, certified volunteers to provide increased rehabilitation capacity inside the prison system – the result: REENTRY-READY INMATES .

Copyright © 2015 by the Strategic Reentry Group. All Rights Reserved. www.StrategicReentryGroup.com

The Framework for Reentry Reformation

**PHASE 1:
COMMUNITY REFORMATION**

Reentry '**stakeholders**' collaborate to build a broad-based **Reentry Coalition** of service providers, community partners and criminal justice leaders to create a **REENTRY-READY COMMUNITY.**

Copyright © 2015 by the Strategic Reentry Group. All Rights Reserved. www.StrategicReentryGroup.com

The Framework for Reentry Reformation

**PHASE 2:
FAMILY REFORMATION**

The Reentry Coalition works with the local **faith community** to create **family support groups** – the result: **REENTRY-READY FAMILIES.**

Copyright © 2015 by the Strategic Reentry Group. All Rights Reserved. www.StrategicReentryGroup.com

The Framework for Reentry Reformation

**PHASE 3:
CORRECTIONS REFORMATION**

The Department of Corrections (and jails) implements **numerous reforms** (based on national best practices) to become **REENTRY-CENTRIC.**

Copyright © 2015 by the Strategic Reentry Group. All Rights Reserved. www.StrategicReentryGroup.com

The Framework for Reentry Reformation

**PHASE 4:
INMATE REFORMATION**

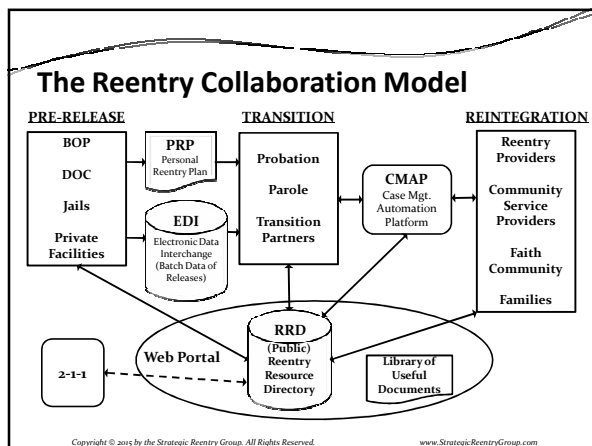
The Reentry Coalition provides an army of trained, certified **volunteers** to provide **increased rehabilitation capacity** inside the prison system – the result: **REENTRY-READY CLIENTS.**

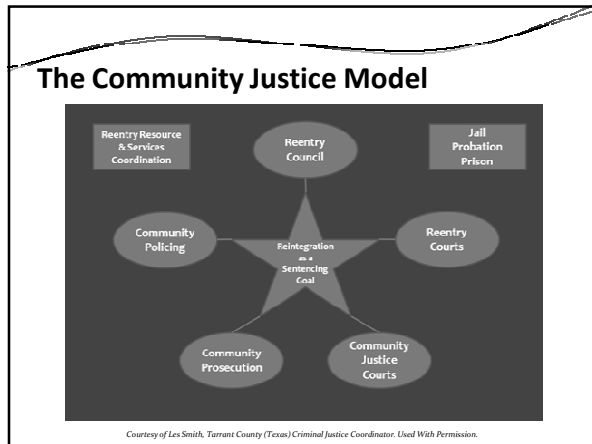
Copyright © 2015 by the Strategic Reentry Group. All Rights Reserved. www.StrategicReentryGroup.com

The Essential Reentry Model

Phase 1 PRE-RELEASE	Phase 2 TRANSITION	Phase 3 REINTEGRATION
1.1 PLAN 1 - Goals 2 - Traps, Red Flags 3 - Criminogenic Needs Assessment 1.2 PREPARE 1 - Release Papers 2 - ID's 3 - Legal Matters 4 - Job Skills 1.3 IDENTIFY 1 - Resources in the Community 2 - Financial Obligations 3 - Career Options 1.4 RELATE 1 - Identify Positive Relationships (family, friends, mentor, church) who will actively support 2 - Engage Mentor	2.1 CONNECT 1 - Connect with Mentor 2 - Picked up at Gate 2.2 SETTLE 1 - Obtain Stable Living Conditions 2 - Acquire Basic Needs 2.3 WORK 1 - Find Employment 2.4 ENGAGE 1 - Engage Support Group (Church, etc.) 2 - Engage Case Management (as needed) 2.5 STABILIZE 1 - Establish Consistent Positive Habits 2.6 RESIST 1 - Resist Temptation	3.1 MAINTAIN 1 - Remain Drug & Alcohol Free 2 - Maintain Employment 3 - Engage Health Services 3.2 FULFILL 1 - Legal Obligations 2 - Financial Obligations 3.3 RE-UNITE 1 - Engage Family Reunification 3.4 INCREASE 1 - Improve Job Skills 2 - Gain Responsibility 3 - Develop New (Non-Ex-Offender) Friends 3.5 UPGRADE 1 - Upgrade Transportation 2 - Seek Career Education 3 - Seek Academic Education 3.6 GIVE BACK 1 - Volunteer for Local Service Projects, Organizations

Copyright © 2015 by the Strategic Reentry Group. All Rights Reserved. www.StrategicReentryGroup.com





Implementing a Web-Based Reentry Resource Directory

What It Is NOT

- A spreadsheet of resource providers
- A web-page on a website that lists service providers by name or by service category
- A “pocket guide” that is printed out and given to returning citizens
- None of these work, because they are static, hard to update & prone to get out-dated quickly

Copyright © 2015 by the Strategic Reentry Group. All Rights Reserved. www.StrategicReentryGroup.com

Implementing a Web-Based Reentry Resource Directory

- Must be hosted online and kept updated at least once a month
- Should be accessible by the public, including case managers, probation officers, chaplains, ex-offenders, their families, and reentry volunteers
- Provide the ability to search the directory, filter the results, and provide details about each organization and the services it provides

Copyright © 2015 by the Strategic Reentry Group. All Rights Reserved. www.StrategicReentryGroup.com

Implementing a Web-Based Reentry Resource Directory

- A simple data structure, implemented in a Web-based database tool
- The main record should be a description of the organization (address, director, phone, website, hours of operation, etc.)
- Then each organization should have one or more “service” records, grouped by one of the categories mentioned above (e.g., food pantry, homeless shelter, housing provider, etc.)

Copyright © 2015 by the Strategic Reentry Group. All Rights Reserved.
www.StrategicReentryGroup.com

Implementing a Web-Based Reentry Resource Directory

- Each service should be fully described, including eligibility criteria (who they do and do not serve) and any other helpful program details
- Warning: Experience has shown that this effort can become political, dealing with territorial issues on “who owns the data”, etc.
- Successful implementation takes *people & political* skills as well as technical skills!

Copyright © 2015 by the Strategic Reentry Group. All Rights Reserved.
www.StrategicReentryGroup.com

Reentry Management Information Systems (RMIS)

- Directory of community and reentry resources
- Client intake system (capturing a robust picture or profile of the client across many dimensions of their life)
- Assessment management system (client assessment data stored & matched with available resources in the community [services, classes, etc.]

Copyright © 2015 by the Strategic Reentry Group. All Rights Reserved.
www.StrategicReentryGroup.com

Reentry Management Information Systems (RMIS)

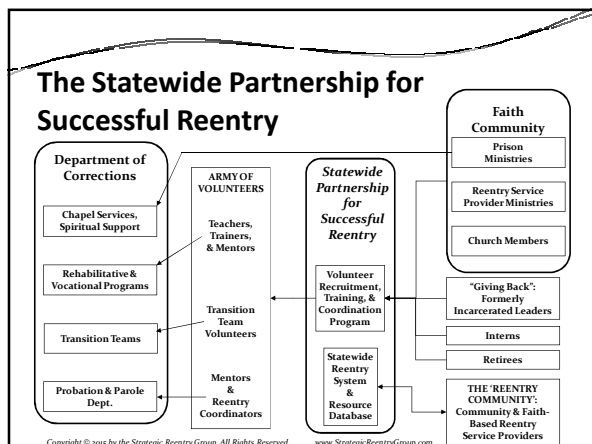
- Case management workbench (client activity tracking, reports on individual, group, program, and organizational-level performance, activities, needs, and issues)
- Client reentry planning tool (allows CM to build a custom plan for each client, so that the client participates in the process and receives a roadmap)

Copyright © 2015 by the Strategic Reentry Group. All Rights Reserved. www.StrategicReentryGroup.com

Reentry Management Information Systems (RMIS)

- Educational management tool (define classes and curricula [and providers], match clients with classes, manage attendance & related activities)
- Ability to bridge data to & from other systems
- Ability for multiple agencies to log in and co-manage clients (electronic client record, privacy protected, ability to attach documents)

Copyright © 2015 by the Strategic Reentry Group. All Rights Reserved. www.StrategicReentryGroup.com



Local Reentry Organizations

- Reentry Coalition
- Reentry Council
- Reentry Task Force
- ***Reentry One-Stop Center***
- ***Reentry Management Office***
- For definitions each one, see the Tech Bulletin on my website

Copyright © 2015 by the Strategic Reentry Group. All Rights Reserved.

www.StrategicReentryGroup.com

Reentry One-Stop Center (ROC)

- A physical location in the community
- Typically a store-front type location in a strip mall in an area of a major urban center
- Easily accessed by the bus system
- Advertised as THE place to go, as soon as one exits prison or jail
- Access to training (such as a “Welcome Back” orientation class), resources, assistance, computers, etc.

Copyright © 2015 by the Strategic Reentry Group. All Rights Reserved.

www.StrategicReentryGroup.com

Reentry One-Stop Center (ROC)

- Appointments with key contacts such as a probation officer or an addiction counselor
- Referrals to a host of community organizations
- Possibly even lite case management, including intake, assessment, and planning
- Eventual co-location of key partner organizations
- Focus is on the “customer” but the system is based on a *data-gathering infrastructure*

Copyright © 2015 by the Strategic Reentry Group. All Rights Reserved.

www.StrategicReentryGroup.com

Reentry Management Office (RMO)

- The highest aspiration of a local reentry initiative and works best when the previous concepts are already in place
- Functions as a true *intermediary* organization
- Purpose: to facilitate the true reintegration of clients by integrating service delivery (agencies & organizations)
- Main deliverable: The Annual Reentry Report

Copyright © 2015 by the Strategic Reentry Group. All Rights Reserved.
www.StrategicReentryGroup.com

Reentry Management Office (RMO)

Function Model

- Identify all stakeholder organizations
- Develop MOU's to get all stakeholders working together as a virtual team
- Identify core services & programs to be used
- Work with stakeholders to define performance measures
- Define community-wide data reporting requirements

Copyright © 2015 by the Strategic Reentry Group. All Rights Reserved.
www.StrategicReentryGroup.com

Reentry Management Office (RMO)

Function Model (cont.)

- Perform annual survey of returning citizens to determine their real experiences & outcomes
- Encourage accountability in the system
- Implement reporting and communication mechanisms to identify bottlenecks in collaboration, reporting, communications, etc.

Governed by...Who?

The Coalition? The County? The City?

Copyright © 2015 by the Strategic Reentry Group. All Rights Reserved.
www.StrategicReentryGroup.com

Continuum of Care

- Conduct a community conversation on the services needed and the categories that make up the *Reentry continuum of care*
- Fill in the service providers known in each category
- Perform a “gap analysis”
- Look for “capacity constraints”
- Encourage the faith community to help fill the gaps and increase the capacity

Copyright © 2015 by the Strategic Reentry Group. All Rights Reserved.

www.StrategicReentryGroup.com

Q&A

For More Info

- Website: www.StrategicReentryGroup.com
- Blog: www.AllThingsReentry.com
- Free e-Book: *Purposeful Neighboring: Creating Reentry-Ready Communities*
- I teach states, prisons, communities & churches how to engage the reentry process
- Lots of free resources on my website
- Phone: (405) 615-6648
- Email: gordonstevenr@gmail.com